



IMAGINE. DISCOVER. CULTIVATE.

**CAC Update - Site Planning**  
**November 30, 2017**



# November 30, 2017 – Site Planning Update

- **Evaluation Criteria Overview**
- **Site Controlling Constraints**
- **Summary of Process to Date**
- **Baseline and Current Alternatives**
- **Next Steps**



# Evaluation Criteria Overview



# Evaluation Criteria Overview

## **INFRASTRUCTURE:**

- Meets Site Controlling Conditions
- Acceptable Rail Consolidation
- Uses 200k Cubic Yards of Fill (Central 70)
- Utility distribution supports Phase 1 and 2 sequencing (and full build-out) and uses existing tie-ins



# Evaluation Criteria Overview

## **OPERATIONS, ACCESS, CIRCULATION:**

- WSSA operations continue during construction
- Meets site operational requirements (loading, ingress/egress, parking, site control, etc.)
- Roadway network supports circulation/connectivity needs
- Positively integrates neighborhoods



# Evaluation Criteria Overview

## NEIGHBORHOOD COMMITMENTS FROM MASTER PLAN:

- Includes two new bridge connections across Platte River
- Includes pedestrian bridge connections over rail at or near rail station
- Improves overall circulation to and through the NWC area
- Creates riverfront access and engages the river into the overall site plan



# Evaluation Criteria Overview

## **PHASING & CONSTRUCTABILITY:**

- Efficient phasing
- Meets or accelerates Baseline schedule
- Meets or is less than Baseline cost



# Evaluation Criteria Overview

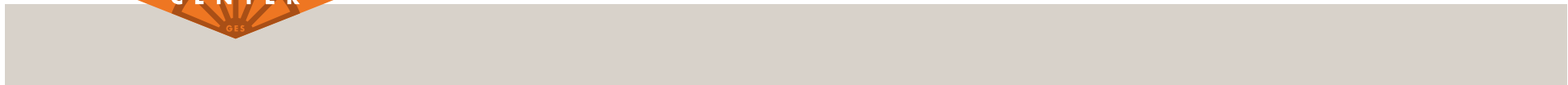
## **OTHER PARTNER CONCERNS:**

- Includes Legacy Building (WSSA)
- Meets CSU Phase 1 and 2 Location Criteria:
  - Animal Health Facility adjacent to Equestrian Center
  - Water Resources Center and Denver Water programs ideally combined into one facility
- Creates opportunities for co-development, activation and community serving uses (CPD)

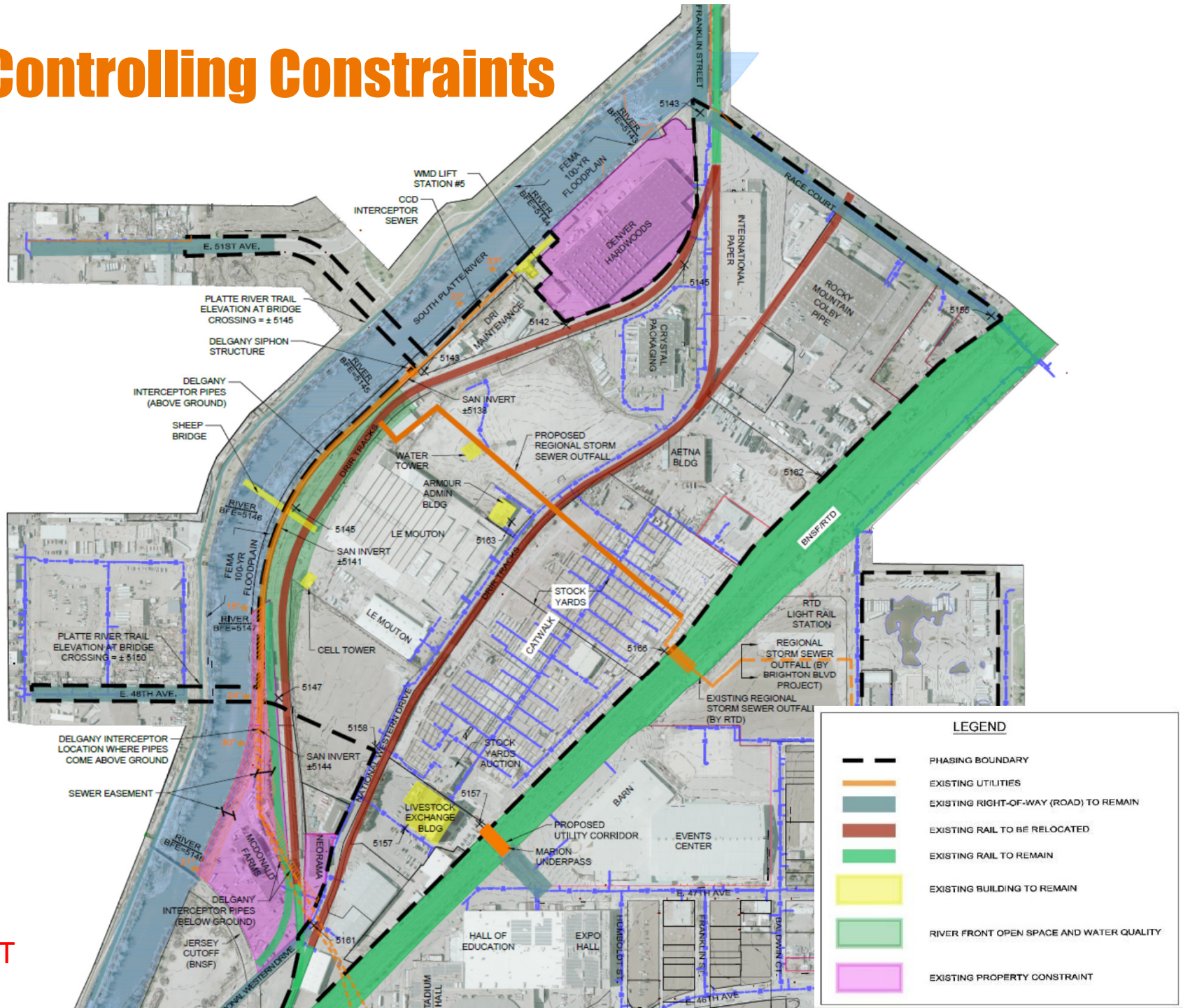




# Site Controlling Constraints



# Site Controlling Constraints



DRAFT

# Summary of Process to Date



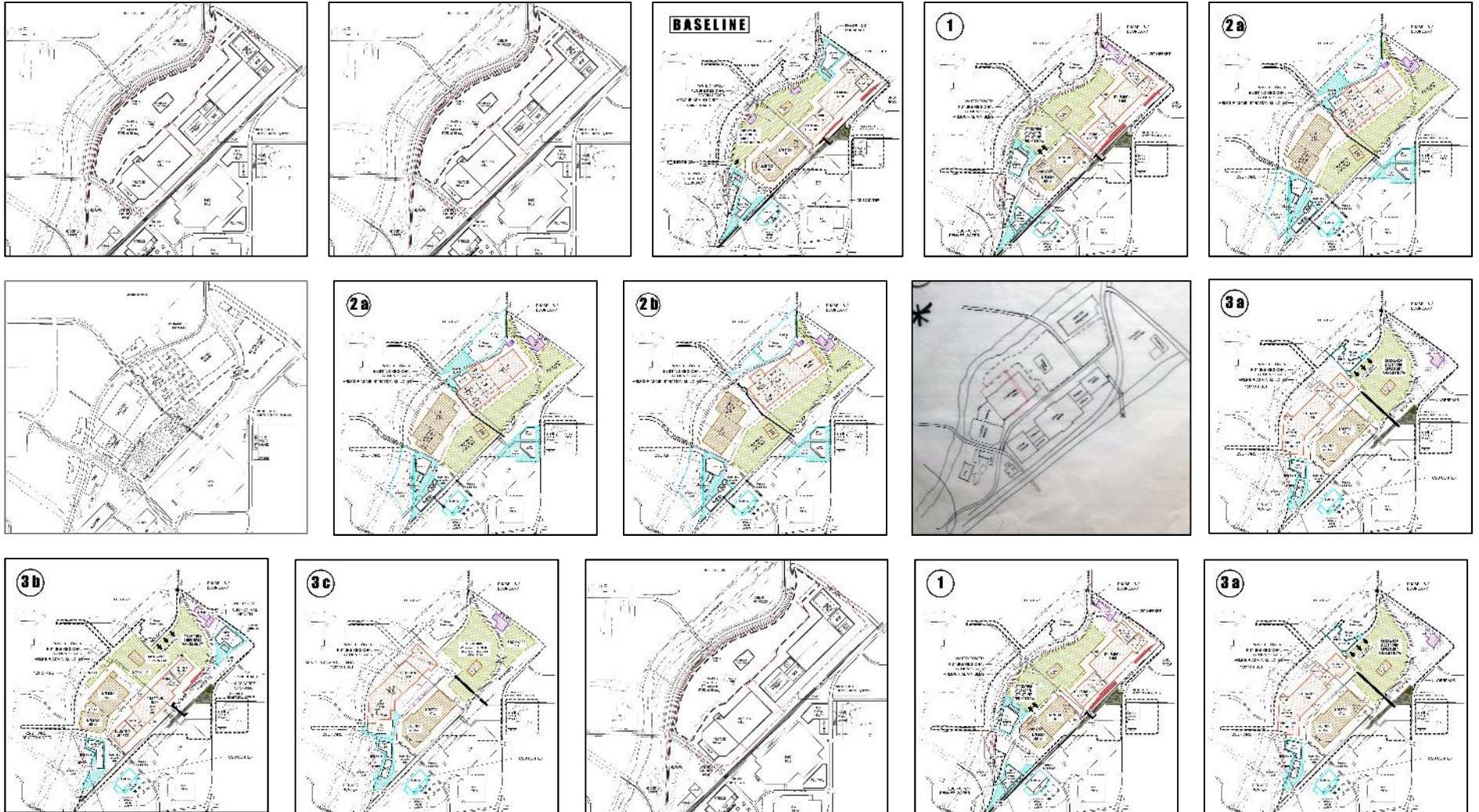
## Process to Date

- **Creation of baseline drawing**
- **Six iterations of alternatives (from 15 to 2 with many variations over three weeks)**
- **Weekly joint work sessions with NWCO, CCD, WSSA and CSU**
- **Weekly individual work sessions with CSU and WSSA**
- **Three additional meetings with CPD and other CCD departments**
- **Series of costing discussions**





# Preliminary Alternatives Studied

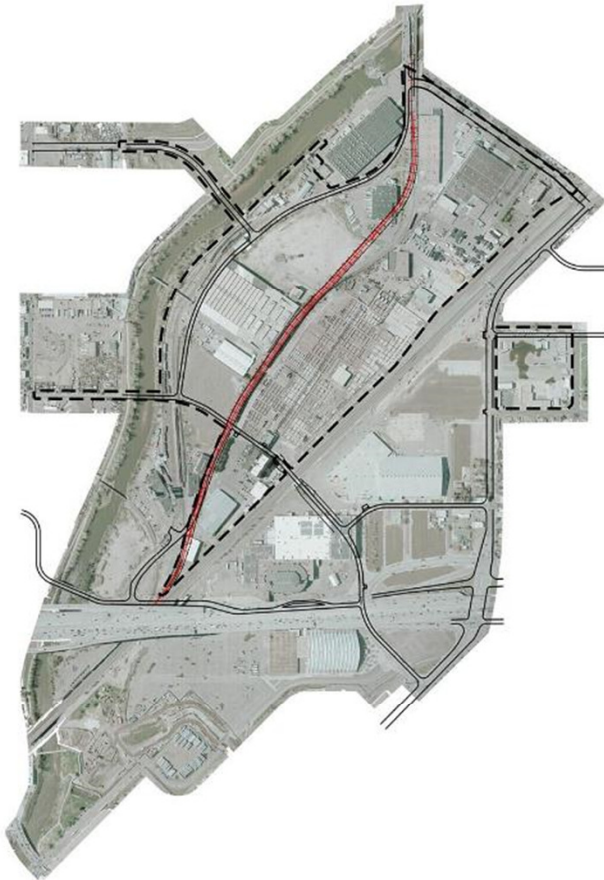


# Baseline and Current Alternatives





# Denver Rock Island (DRIR) Alternative Alignments



Master Plan (Center)



West Alignment

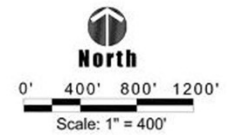


East Alignment

November 21, 2017

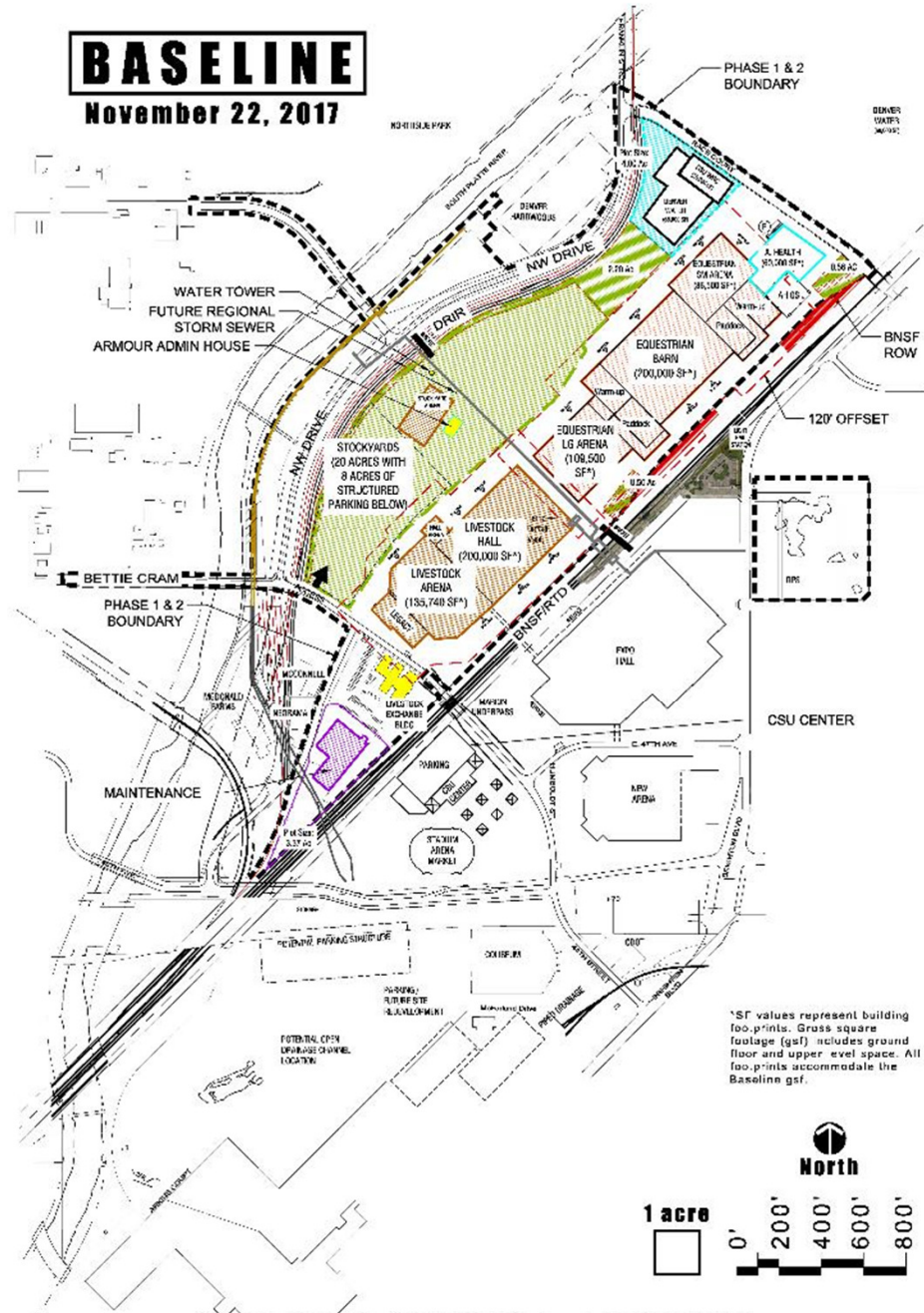


## NATIONAL WESTERN CENTER



# BASELINE

November 22, 2017



## SITE PLAN CONCEPT - BASELINE

November 22, 2017



# NATIONAL WESTERN CENTER





# BASELINE

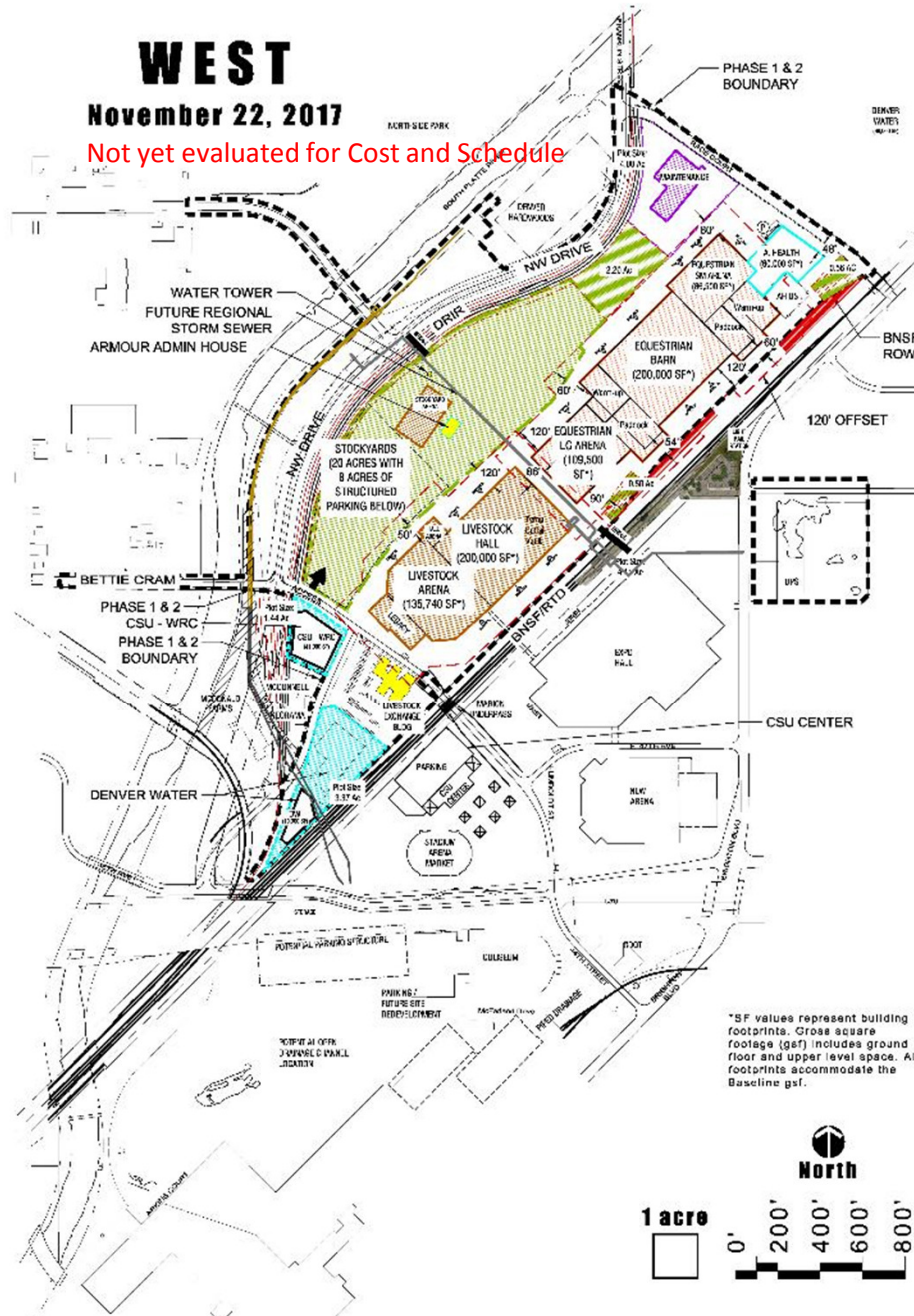
November 22, 2017



# WEST

November 22, 2017

Not yet evaluated for Cost and Schedule



DRAFT

November 22, 2017  
M I G studioINSITE

## SITE PLAN CONCEPT - WEST NATIONAL WESTERN CENTER

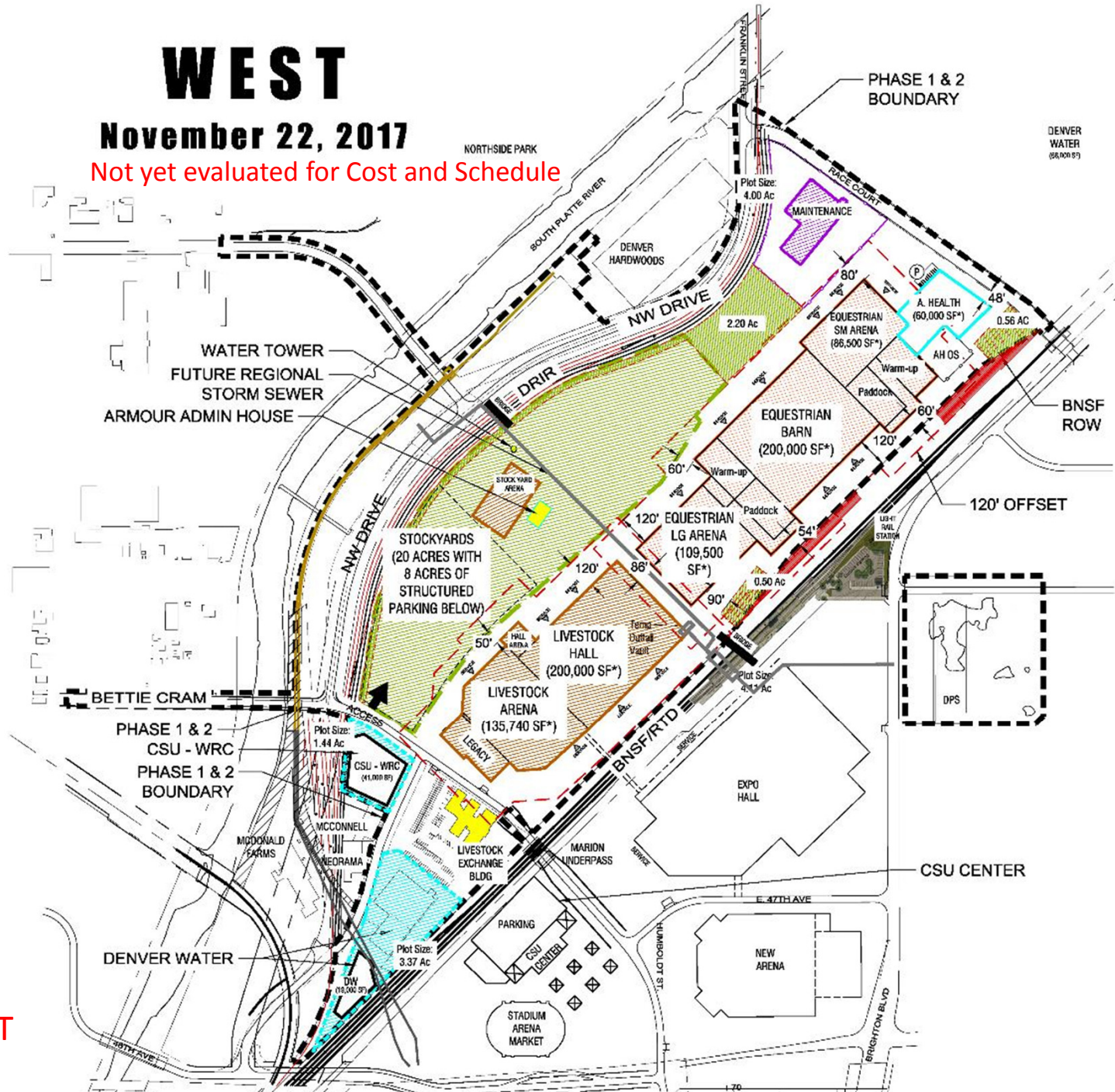




# WEST

November 22, 2017

Not yet evaluated for Cost and Schedule



DRAFT

# EAST

November 22, 2017

Not yet evaluated for Cost and Schedule



DRAFT

November 22, 2017  
M G studioINSITE

## EAST RAIL ALIGNMENT NATIONAL WESTERN CENTER





# EAST

November 22, 2017

Not yet evaluated for Cost and Schedule



DRAFT

# Next Steps



## Current Efforts

- Phasing and Constructability Evaluation
- Costing Exercise
- Develop Additional Overlays
  - Stock Show and other events
  - Non-Event Days/365-day use
  - Co-Development and Activation Opportunities
  - Community Use and Circulation
  - Historic Resources and Interpretation
  - Riverfront/Plazas/Public Spaces
  - Gateways and Public Art
  - Streetscape Function and Character



## Next Steps

- Detail operations and circulation for equestrian and livestock facilities
- Explore alternatives for development south of Bettie Cram Drive
- Present draft refinements to SteerCom and CAC on December 14







IMAGINE. DISCOVER. CULTIVATE.

**Site Planning**  
**November 30, 2017**

